





Piping Products | Flexible Sprinkler Hose | Models VK27B (Braided) & VK27N (Unbraided)



Fireking flexible sprinkler hoses are complete assemblies of stainless steel hoses allowing the fast and easy installation of sprinklers into commercial false ceilings. The hoses are available with either UL/LPCB or UL/FM/LPCB/VdS approvals and in a variety of lengths.

Hose diameter	25 mm inner diameter 27 mm outer diameter
Approvals*	   
Inlet size	1"/DN25 or 1-1/4"/DN32 BSP (1"/DN25 NPT on request)
Outlet size	1/2"/DN15 or 3/4"/DN20
Lengths	700 mm, 1,000 mm, 1,200 mm, 1,500 mm or 1,800 mm
Support bar lengths	1,000 mm or 1,500 mm
Material	Stainless steel
Pressure rating	VK27N: 12 bar (UL), 14 bar (LPCB) VK27B: 12 bar (FM), 14 bar (UL & LPCB), 16 bar (VdS)
Maximum ambient temperature	100 °C (212 °F)
Application	Water based fire-suppression systems

* VK27N: UL & LPCB | VK27B: UL, FM, LPCB & VdS

Features & benefits

- Fast installation of pendent, recessed and concealed sprinklers (sprinklers must be ordered separately)
- Cuts install time dramatically
- Easy to use fittings
- Single length clips allow for installation of either pendent or recessed/concealed sprinklers
- Variety of lengths to suit all situations
- Standard 1,000 mm support bar fits most ceiling grids (longer available on demand)
- Up to 4 bends allowed
- Low equivalent length values
- Outlet fitting marked with distance from outlet to aid in positioning

Installation instructions

The VK27 flexible sprinkler hoses must be installed by appropriately experienced and trained fitters and all instructions must be followed. Please contact your local Viking office for product training. Failure to follow these instructions may lead to incorrect installation and system function.

These flexible sprinkler hoses are designed to be installed in wet pipe sprinkler systems only and in accordance with recognized sprinkler installation and design regulations such as NFPA 13 and EN12845. The hoses shall be installed indoors only.

The VK27 flexible sprinkler hose is designed to provide easy positioning and installation of sprinklers from branch line to the sprinkler within a single compartment and shall not pass from one compartment to another, or through fire separation materials.

Viking does not recommend the use of chemical additives when using the VK27 flexible sprinkler hose. The sprinkler system designer has a responsibility to verify the suitability for use if chemical additives are used or if the flex hose is exposed to excessive levels of UV, i.e. over natural light limits. The VK27 flexible hoses do not carry water authority approvals and should not be directly connected to potable water systems.

Flexible hoses should be inspected regularly in accordance with the requirements of the regulations in place at the installation location.

Continued on page 2

Note: This document contains basic product information only. Information, photos and drawings are not contractually binding. In all cases, the manufacturer's full technical documentation remains the reference document. Note that certificates, test reports and approvals may be published in the OEM name. The contents of this publication are subject to modifications without notice. All rights reserved
Fireking™ is a trademark of The Viking Corporation

Piping Products | Flexible Sprinkler Hose | Models VK27B (Braided) & VK27N (Unbraided)

Installation instructions (continued)

1. Refer to the local installation standards
2. Install the 1" flexible hose inlet nipple to the sprinkler branch pipe. The hose should be detached from the nipple for this.
3. Attach the hose to the inlet nipple by first hand-tightening the slip nut. Do not apply any sealant between the hose and slip nut connection. Further tighten the slip nut with a 1/4 turn using a wrench (approximately 12 Nm). Excessive force can damage the o-ring inside the slip nut.
4. Assemble the supplied bracket and square bar as shown in **Figure 1** and attach the square bar to the T-bar (ceiling support) with supplied bracket and bolts. To allow for final adjustment, the bracket bolts should be hand tight only at this stage.
5. Bend the hose carefully observing the minimum bend radius so that the outlet reducer is in the correct location relative to the sprinkler location (**Figure 2**).
6. For a longer flexible hoses (1,200 mm and above), intermediate hose support is recommended to secure the movement of the hose.
7. Verify that the outlet reducer is located in the correct position before tightening the bracket bolts (**Figure 3**).
8. Install the sprinkler head into the outlet reducer. If sprinkler protective caps are removed during installation, it is recommended to replace them after installation. Caps should be removed at the end of the installation project.

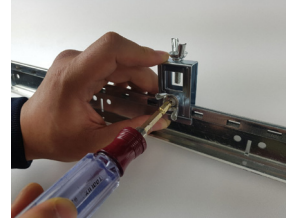


Figure 1

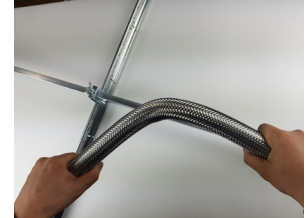


Figure 2





Figure 3



Figure 4

Product information | Model VK27N unbraided hoses

- **Inlet:** 1"/DN25 BSP or 1-1/4"/DN32 BSP
- **Rated working pressure:** 12 bar (UL); 14 bar (LPCB)
- **Minimum bend radius:** 100 mm (UL); 150 mm (LPCB)
- **Support bar:** 1,000 mm
- **Approvals:**  

Part Number ¹	Length (mm)	Outlet	Max. # 90° Bends		Equiv. Length (m) ²			
			UL	LPCB	UL	LPCB		
						Straight ³	90° L ⁴	90° L2 ⁵
VK27N-T700(1/2H)	700	DN15 (1/2")	2	2	7.9	6.4	6.7	12.7
VK27N-T1000(1/2H)	1,000		3	3	13.7	12.0	11.8	18.5
VK27N-T1200(1/2H)	1,200		3	3	15.5	13.7	14.0	19.8
VK27N-T1500(1/2H)	1,500		3	3	20.1	16.6	16.9	22.8
VK27N-T1800(1/2H)	1,800		3	3	21.0	18.8	19.2	24.6
VK27N-T700(3/4H)	700	DN20 (3/4")	2	2	9.4	6.4	6.7	-
VK27N-T1000(3/4H)	1,000		3	3	15.2	12.0	11.8	-
VK27N-T1200(3/4H)	1,200		3	3	16.8	13.7	14.0	-
VK27N-T1500(3/4H)	1,500		3	3	21.3	16.6	16.9	-
VK27N-T1800(3/4H)	1,800		3	3	22.6	18.8	19.2	-

¹ For NPT version replace "1/2H" or "3/4H" with "1/2M" or "3/4M". For 1-1/4"/DN32 BSP inlet replace "1/2H" or "3/4H" with "1/2J" or "3/4J"

² Equivalent length of 1"/DN25 Schedule 40 steel pipe (C=120)

³ With the maximum allowed 90° bends in the hose and a straight outlet nipple

⁴ With the allowed 90° bends in the hose and an L-style 90° outlet nipple





⁵ With the allowed 90° bends in the hose and an L2-style 90° outlet nipple

Note: This document contains basic product information only. Information, photos and drawings are not contractually binding. In all cases, the manufacturer's full technical documentation remains the reference document. Note that certificates, test reports and approvals may be published in the OEM name. The contents of this publication are subject to modifications without notice. All rights reserved

Fireking™ is a trademark of The Viking Corporation

Piping Products | Flexible Sprinkler Hose | Models VK27B (Braided) & VK27N (Unbraided)

Product information | Model VK27B braided hoses

- **Inlet:** 1"/DN25 BSP or 1-1/4"/DN32 BSP
- **Rated working pressure:** 12 bar (FM); 14 bar (UL & LPCB); 16 bar (VdS)
- **Minimum bend radius:** 100 mm (UL), 150 mm (LPCB), 230 mm (FM)
- **Support bar:** 1,000 mm
- **Approvals:**    

Part Number ¹	Length (mm)	Outlet	Max. # 90° Bends			Equiv. Length (m) ²					
			UL	FM	LPCB	UL	FM	VdS	LPCB		
									Straight ³	90° L ⁴	90° L2 ⁵
VK27B-T700(1/2H)	700	DN15 (1/2")	2	1	2	7.9	8.5	3.9	4.8	5.5	11.6
VK27B-T1000(1/2H)	1,000		3	2	3	13.7	14.0	5.5	10.1	10.6	16.9
VK27B-T1200(1/2H)	1,200		3	2	3	15.5	17.4	6.6	12.1	12.2	18.1
VK27B-T1500(1/2H)	1,500		3	3	3	20.1	21.3	8.3	15.4	15.3	21.3
VK27B-T1800(1/2H)	1,800		3	4	3	21.0	25.0	9.9	17.9	18	23.5
VK27B-T700(3/4H)	700	DN20 (3/4")	2	1	2	9.4	8.5	3.9	4.8	5.5	-
VK27B-T1000(3/4H)	1,000		3	1	3	15.2	12.5	5.5	10.1	10.6	-
VK27B-T1200(3/4H)	1,200		3	2	3	16.8	15.2	6.6	12.1	12.2	-
VK27B-T1500(3/4H)	1,500		3	3	3	21.3	19.2	8.3	15.4	15.3	-
VK27B-T1800(3/4H)	1,800		3	4	3	22.6	23.2	9.9	17.9	18	-

¹ For NPT version replace "1/2H" or "3/4H" with "1/2M" or "3/4M". For 1-1/4"/DN32 BSP inlet replace "1/2H" or "3/4H" with "1/2J" or "3/4J"
² Equivalent length of 1"/DN25 Schedule 40 steel pipe (C=120)
³ With the maximum allowed 90° bends in the hose and a straight outlet nipple
⁴ With the allowed 90° bends in the hose and an L-style 90° outlet nipple
⁵ With the allowed 90° bends in the hose and an L2-style 90° outlet nipple

Note: This document contains basic product information only. Information, photos and drawings are not contractually binding. In all cases, the manufacturer's full technical documentation remains the reference document. Note that certificates, test reports and approvals may be published in the OEM name. The contents of this publication are subject to modifications without notice. All rights reserved

Fireking™ is a trademark of The Viking Corporation

Piping Products | Flexible Sprinkler Hose | Models VK27B (Braided) & VK27N (Unbraided)

Adjustable outlet nipples | L-, L1- & L2-style

The VK27 flexible hose is also available with three 90° outlet nipples designed to allow easier and faster installation in a variety of situations.

All three styles (L, L1 & L2) are LPCB approved and the L2-style is FM approved & UL listed.

L-style adjustable outlet nipple


The traditional L-style outlet nipple provides the best hydraulic performance and is installed into the standard ceiling bracket in place of the straight outlet nipple.

The L-style nipple must be ordered separately.

Part number:

FK-L-15 – 1/2" outlet

FK-L-20 – 3/4" outlet

Approval: 



L-style outlet nipple (15 mm)

L1-style adjustable outlet nipple

The L1-style elbow allows the outlet elbow to be fixed directly to the floor slab or into the standard ceiling bracket.

If fixed directly to the floor slab then the vertical position of the nipple can be adjusted using the M10 adjustment bolt.

The L1-style nipple must be ordered separately.


Part number:

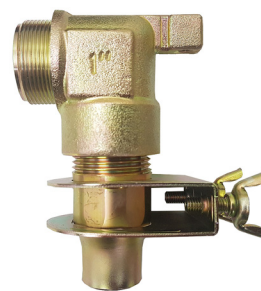
FK-L1-B-15: for floor slab attachment of 15 mm sprinklers

FK-L1-B-20: for floor slab attachment of 20 mm sprinklers

FK-L1-15: for center bracket installation of 15 mm sprinklers

FK-L1-20: for center bracket installation of 20 mm sprinklers

Approval: 



L1-style nipple for center bracket installation



L1-style nipple for floor slab installation

L2-style adjustable outlet nipple

The L2-style nipple allows the outlet elbow to be fixed directly to the floor slab. The L2-style nipple is shorter than the L1-style which makes it ideal where the ceiling void depth is very shallow.

Once fixed directly to the floor slab then the vertical position of the nipple can be adjusted using the adjustment bolt. The bracket is designed to take an M10 size bolt.

The L2-style nipple must be ordered separately and is available for 15 mm sprinklers only.

Part number:

FK-L2-60 – for floor slab attachment for 15 mm sprinklers, 60 mm long

FK-L2-90 – for floor slab attachment for 15 mm sprinklers, 90 mm long

Approvals:   



L2-style nipple

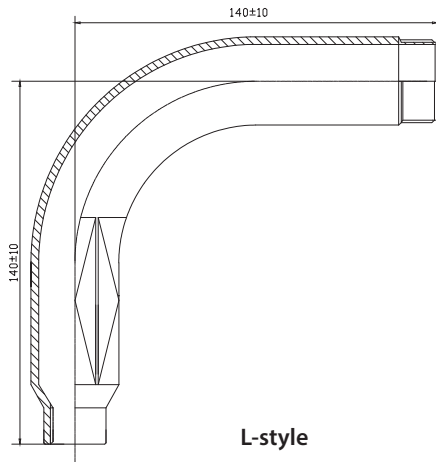
Note: This document contains basic product information only. Information, photos and drawings are not contractually binding. In all cases, the manufacturer's full technical documentation remains the reference document. Note that certificates, test reports and approvals may be published in the OEM name.

The contents of this publication are subject to modifications without notice. All rights reserved

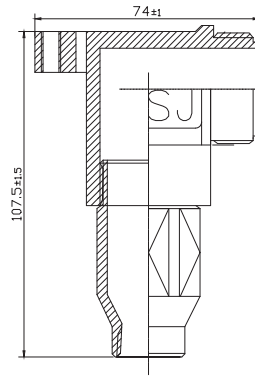
Fireking™ is a trademark of The Viking Corporation

Piping Products | Flexible Sprinkler Hose | Models VK27B (Braided) & VK27N (Unbraided)

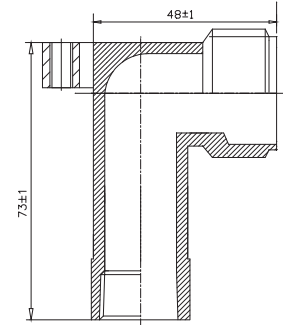
Adjustable outlet nipples | Dimensions



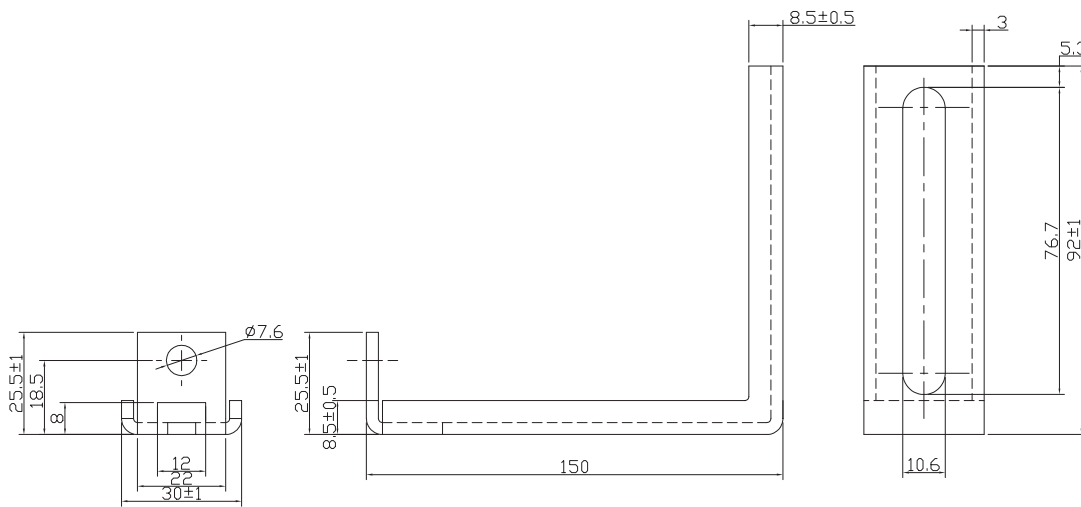
L-style



L1-style



L2-style



Floor slab bracket (L1- & L2-style)

Note: This document contains basic product information only. Information, photos and drawings are not contractually binding. In all cases, the manufacturer's full technical documentation remains the reference document. Note that certificates, test reports and approvals may be published in the OEM name. The contents of this publication are subject to modifications without notice. All rights reserved

Fireking™ is a trademark of The Viking Corporation